

ASSESSMENT OF AIR POLLUTION IN SOME REGIONS IN THE EUROPEAN PART OF RUSSIA USING MOSS- BIOMONITORING TECHNIQUE AND NAA

K. Vergel¹, Z.I. Goryainova¹, M.V. Frontasyeva¹, I.V. Vikhrova², N.A. Lebedeva³, A.M. Dunaev⁴.

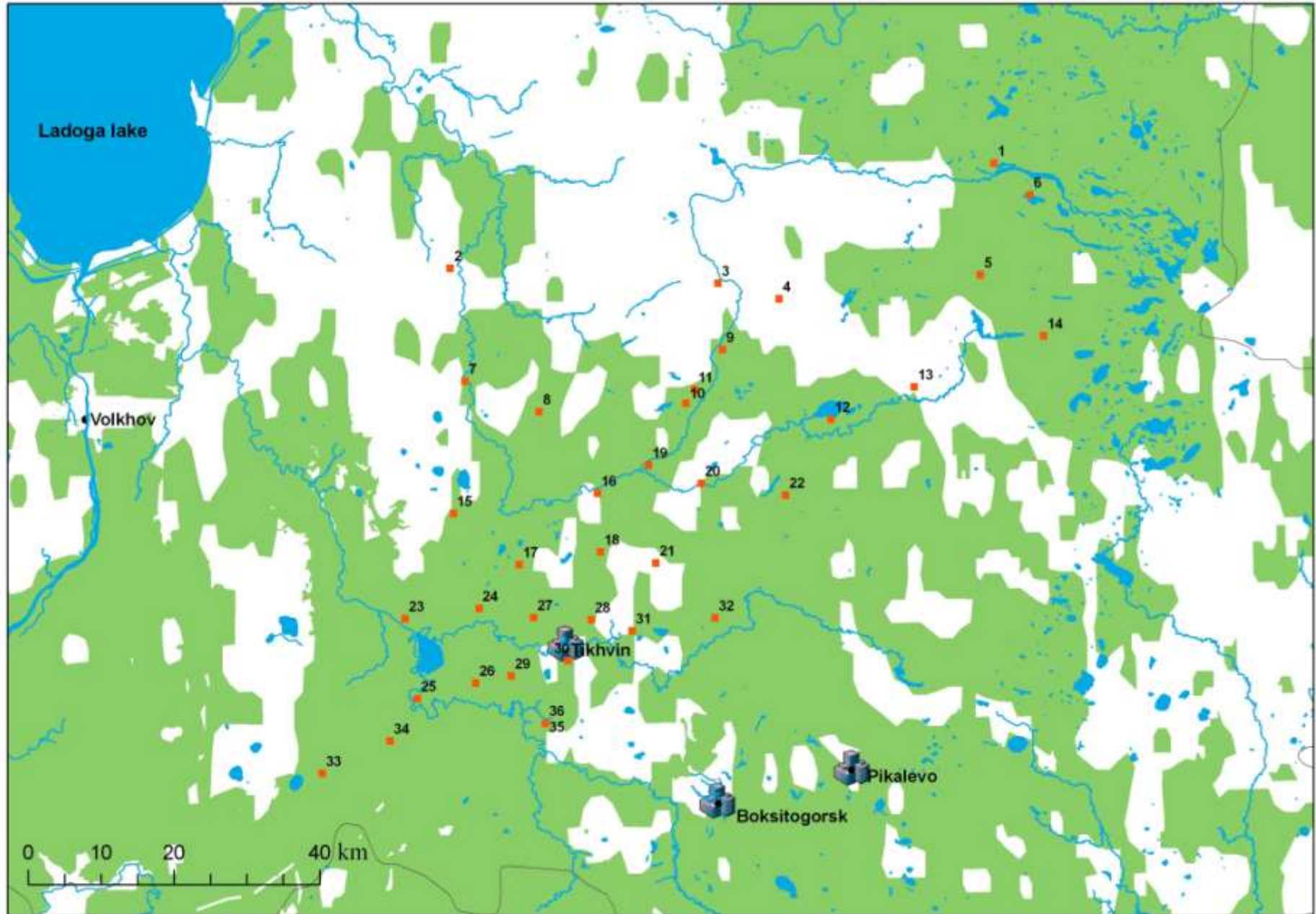
¹ Frank Laboratory of Neutron Physics, Joint Institute for Nuclear Research, Dubna, Russian Federation

² School №8, Tikhvin, Russia

³ Liceum No.1, Volgorechensk, Kostromskaya region, Russia

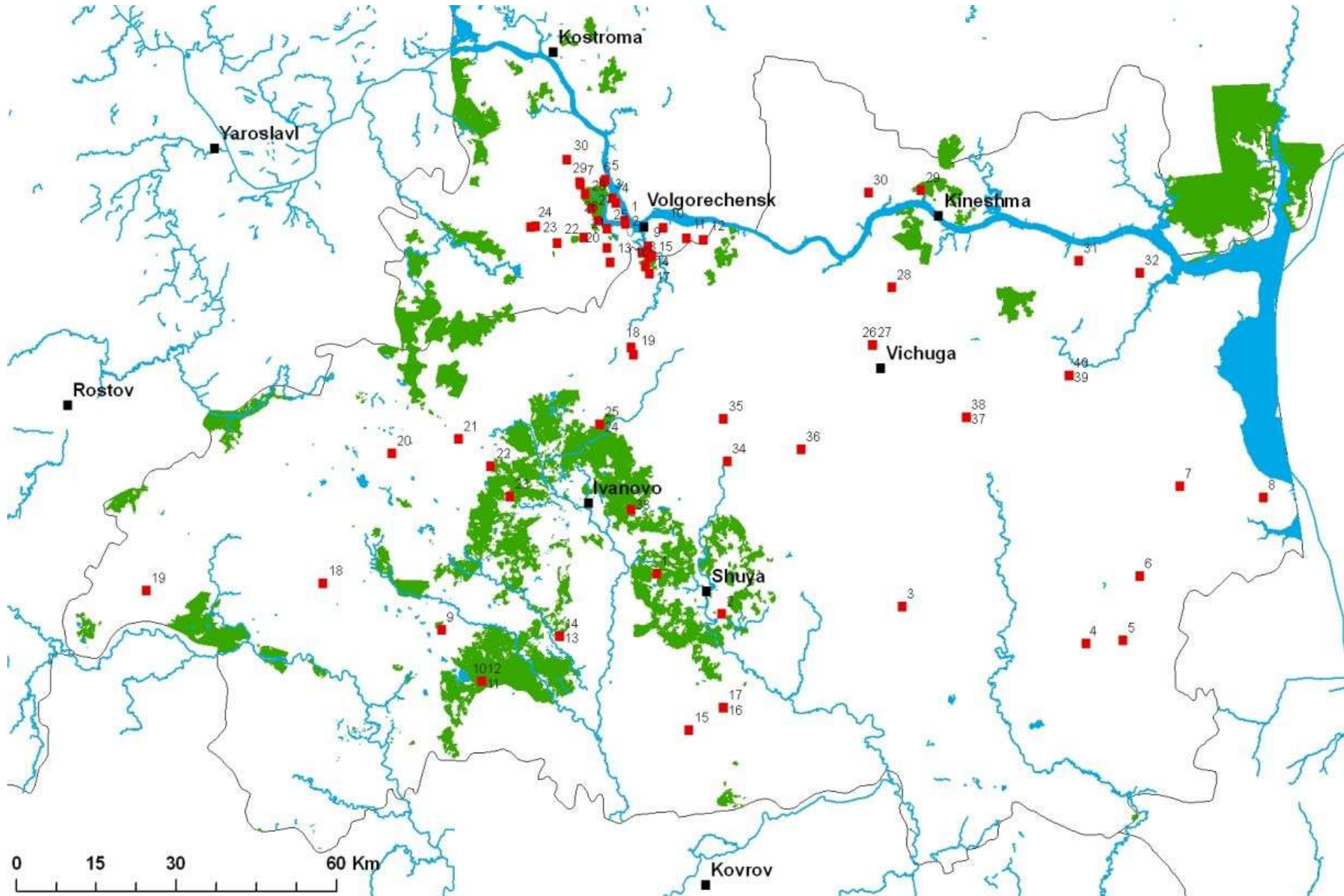
⁴ Ivanovo State University of Chemistry and Technology, Ivanovo, Russia

Sampled territory in Leningradskaya region 36



Sampled territory in Kostromskaya and Ivanovskaya regions

30+40



Elements

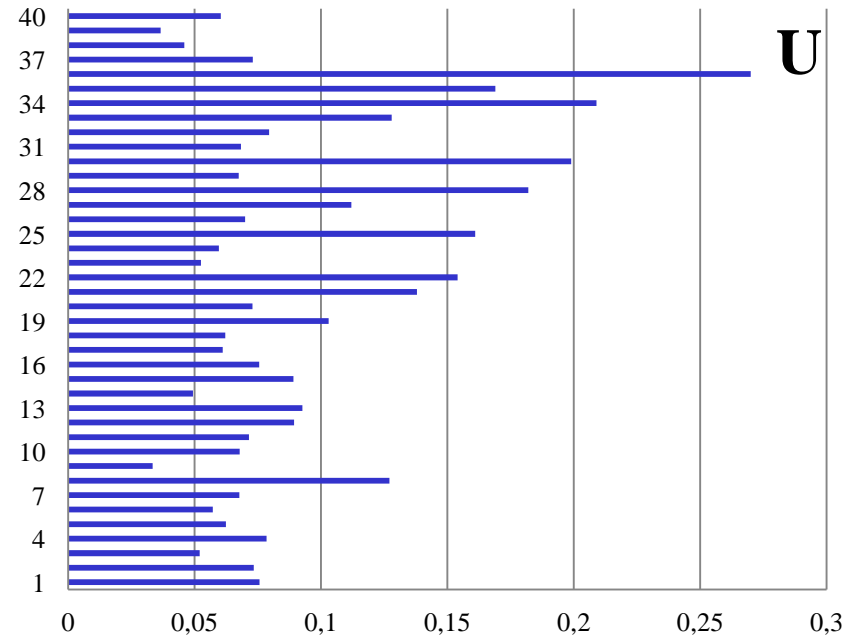
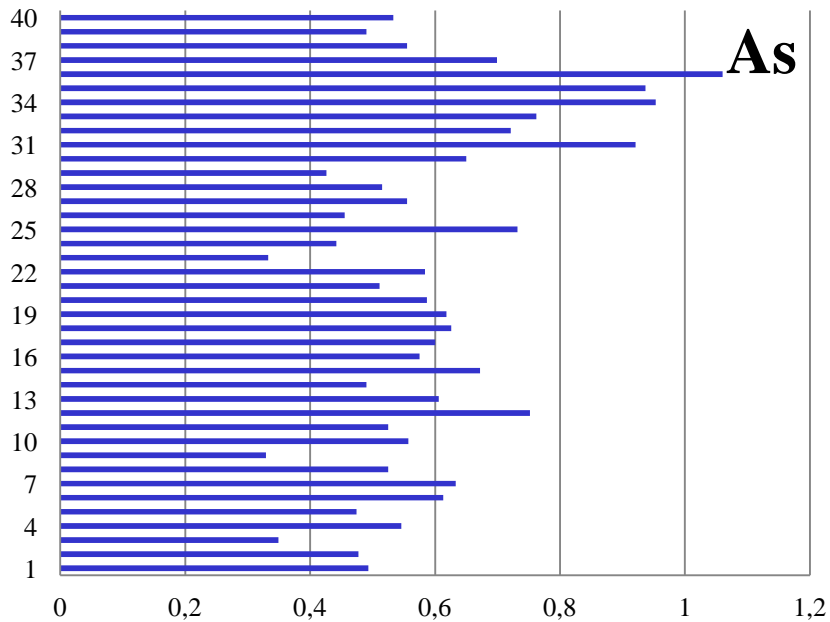
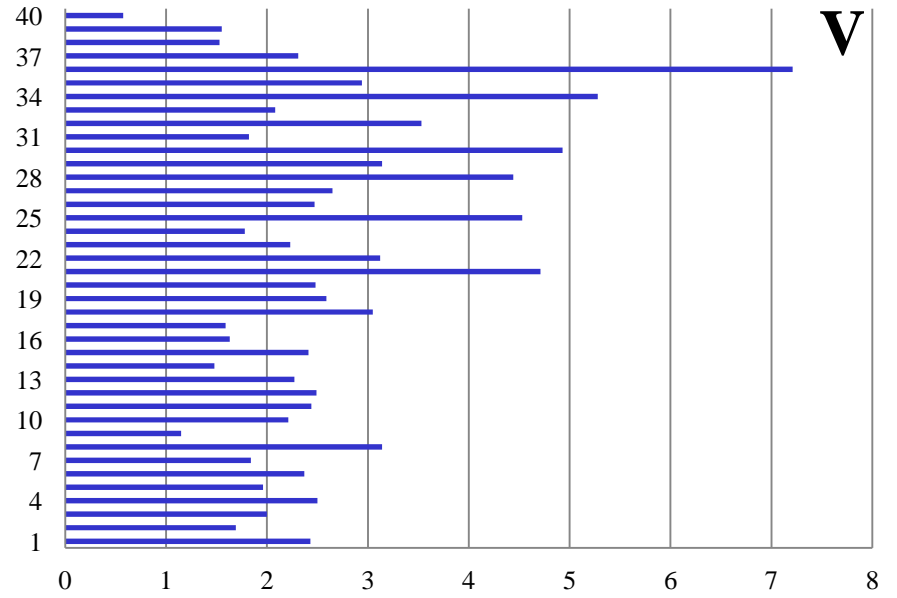
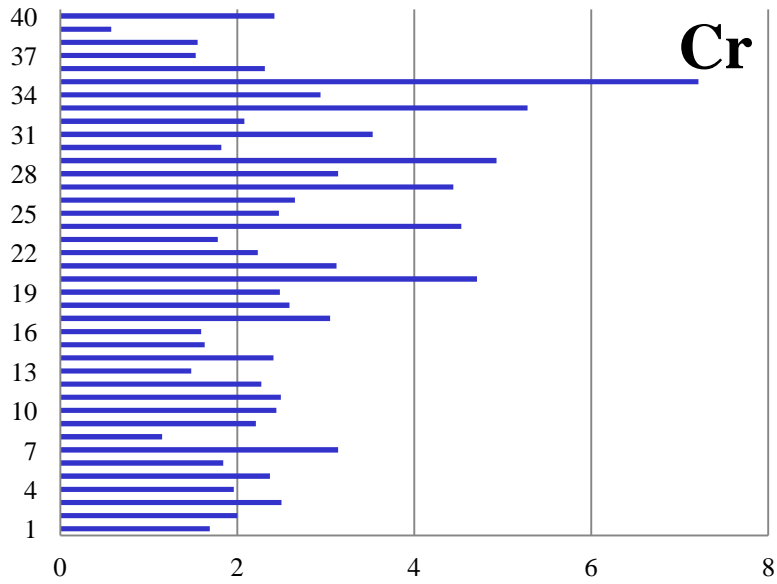
H																	He
Li	Be											B	C	N	O	F	Ne
Na	Mg											Al	Si	P	S	Cl	Ar
K	Ca	Sc	Ti	V	Cr	Mn	Fe	Co	Ni	Cu	Zn	Ga	Ge	As	Se	Br	Kr
Rb	Sr	Y	Zr	Nb	Mo	Tc	Ru	Rh	Pd	Ag	Cd	In	Sn	Sb	Te	I	Xe
Cs	Ba	La*	Hf	Ta	W	Re	Os	Ir	Pt	Au	Hg	Tl	Pb	Bi	Po	At	Rn
Fr	Ra	Ac**															

*	Ce	Pr	Nd	Pm	Sm	Eu	Gd	Tb	Dy	Ho	Er	Tm	Yb	Lu
**	Th	Pa	U	Np	Pu	Am	Cm	Bk	Cf	Es	Fm	Md	No	Lw

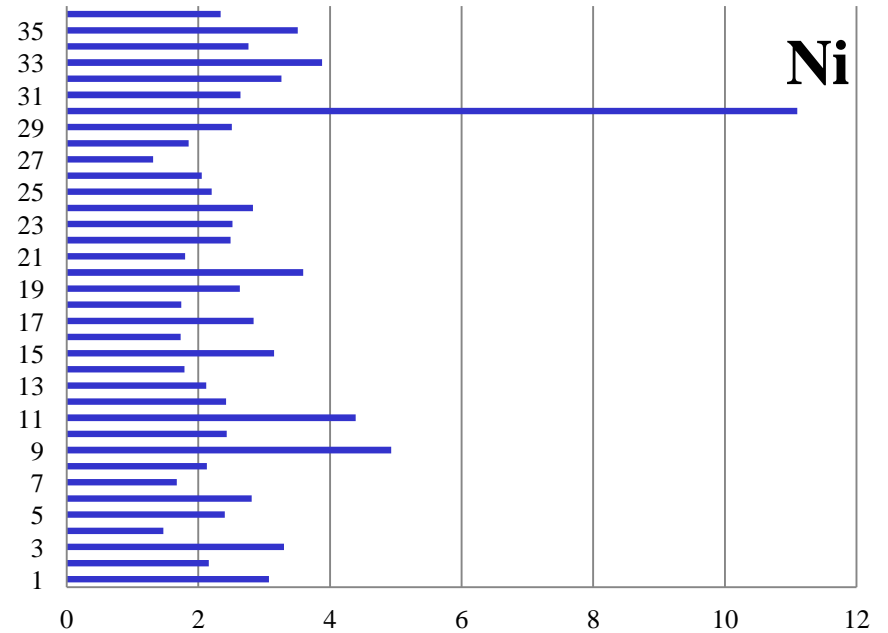
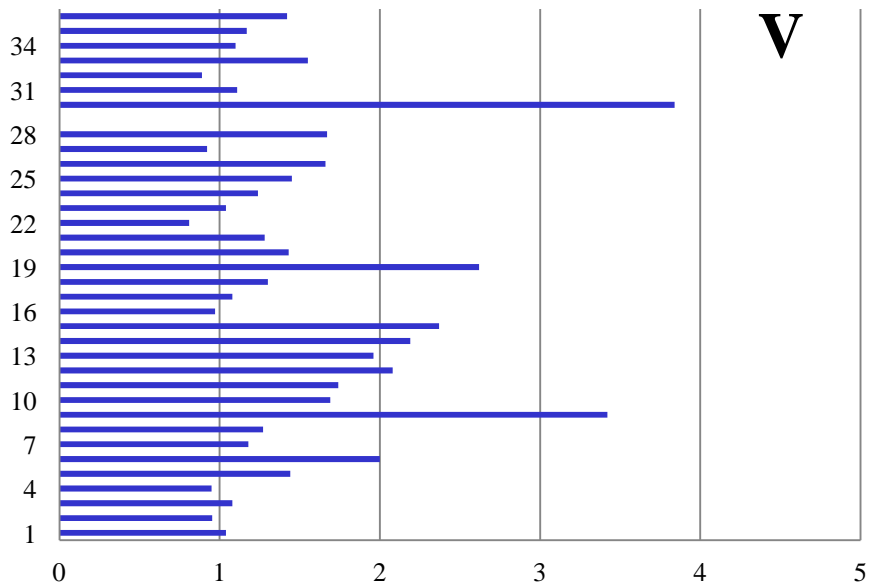
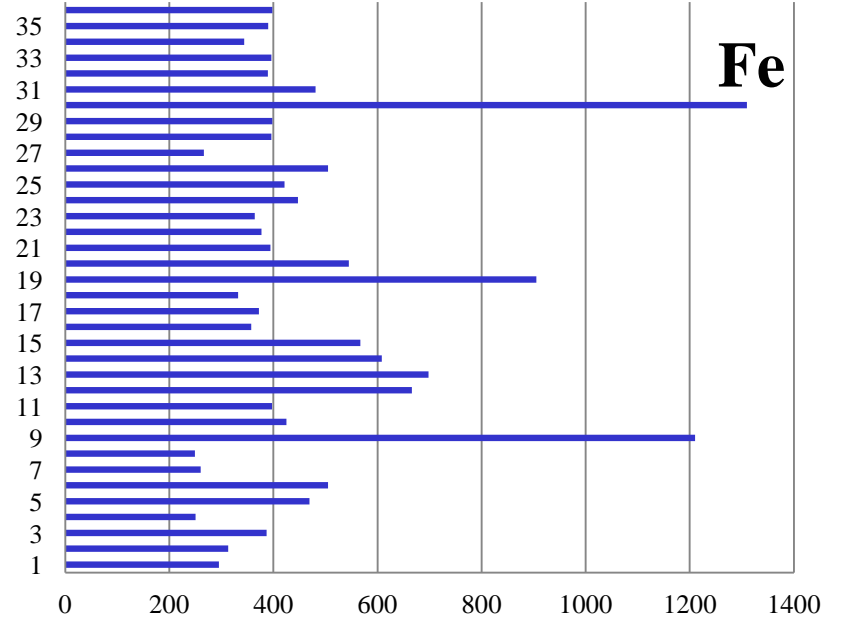
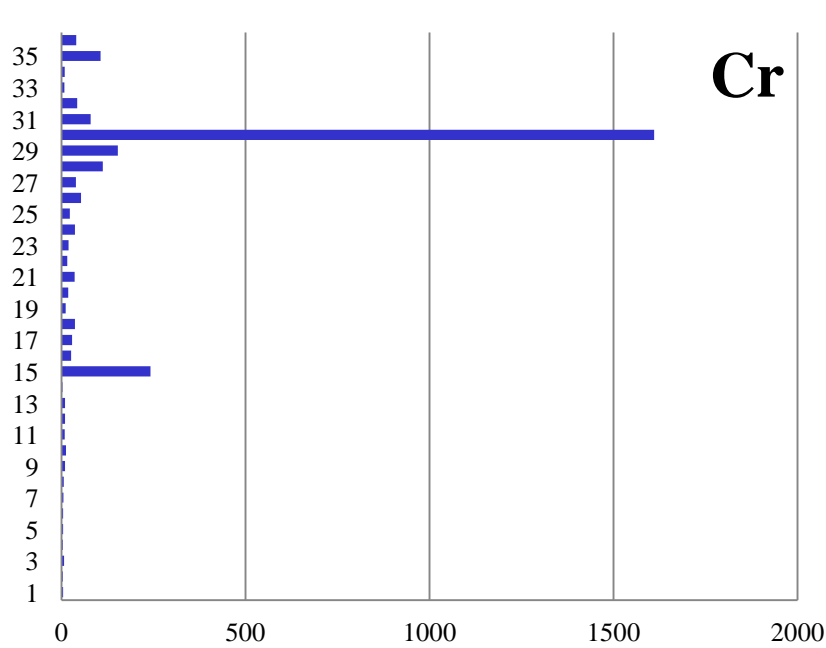
■ Elements, determined by NAA

Atlas: As, Cr, Cu, Fe, Ni, V, Zn

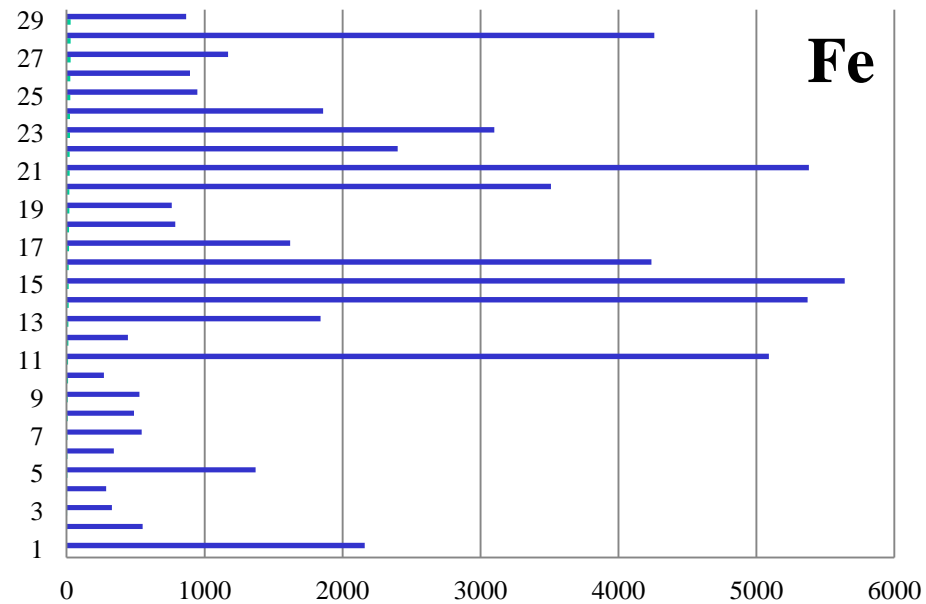
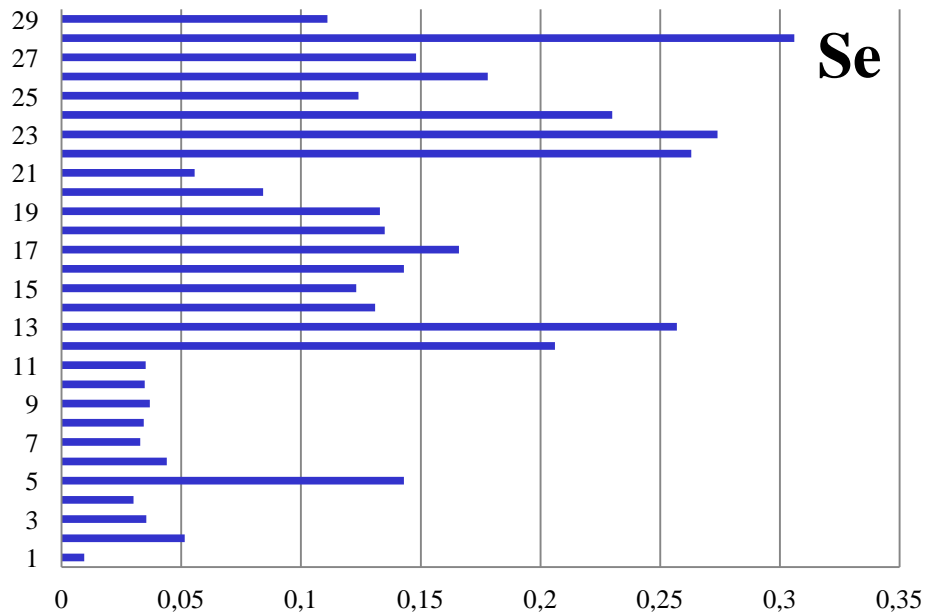
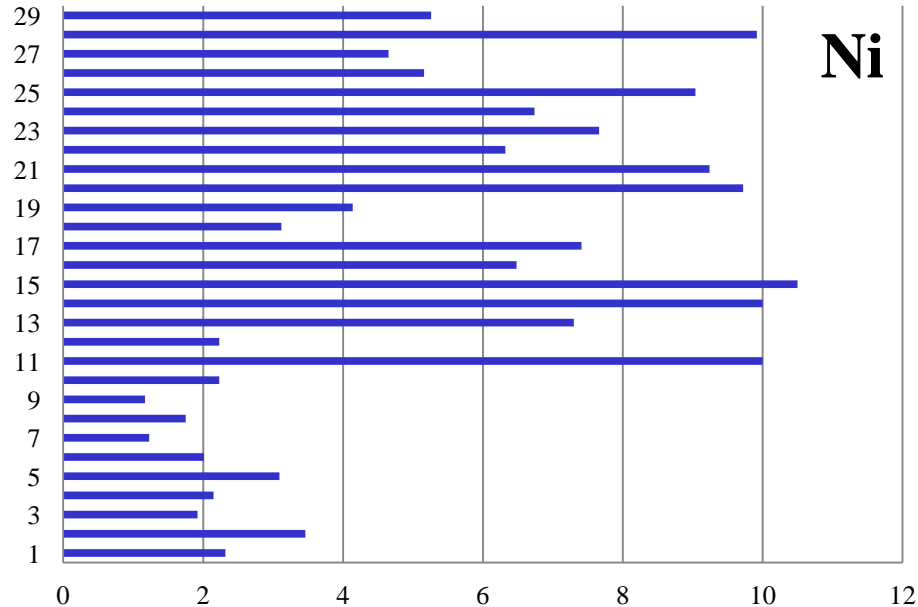
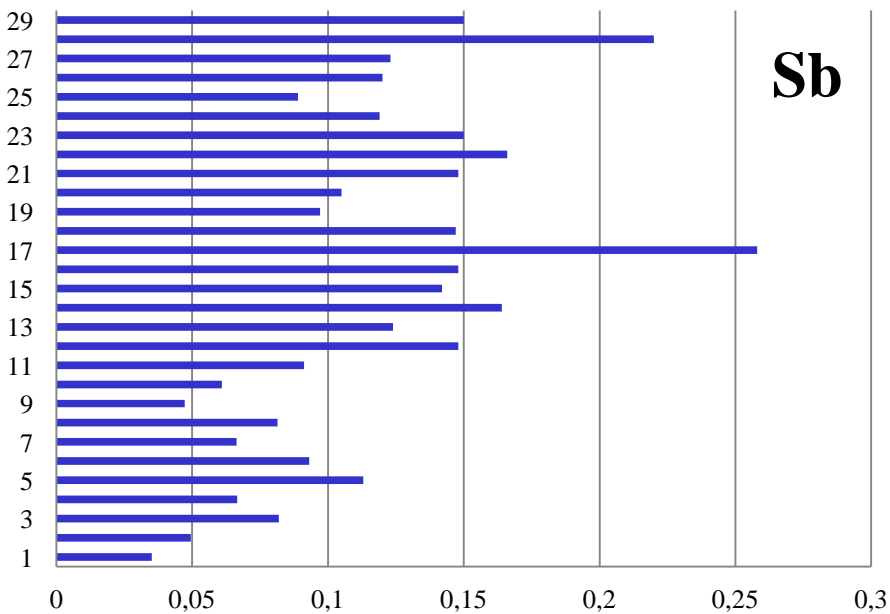
Ivanovskaya region



Leningradskaya region

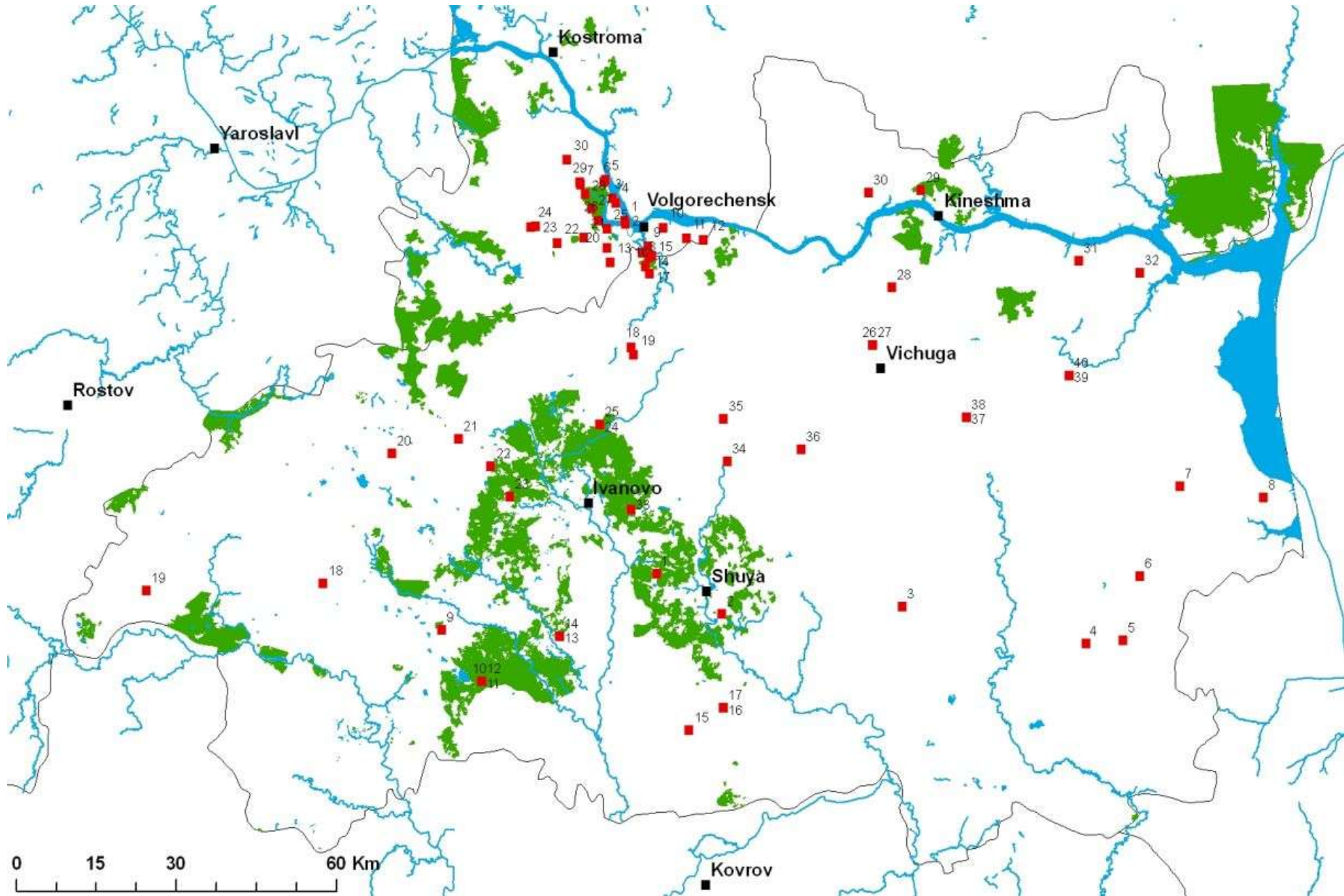


Kostromskaya region

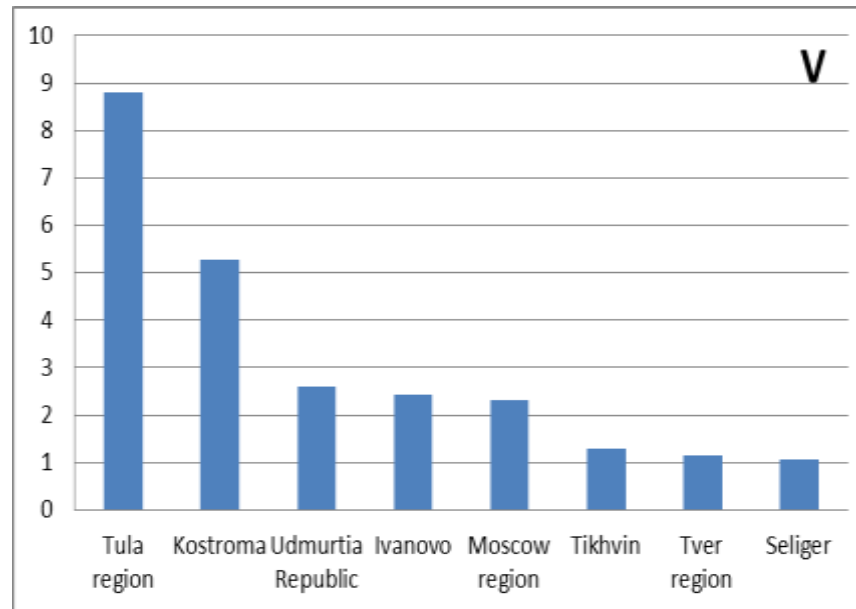
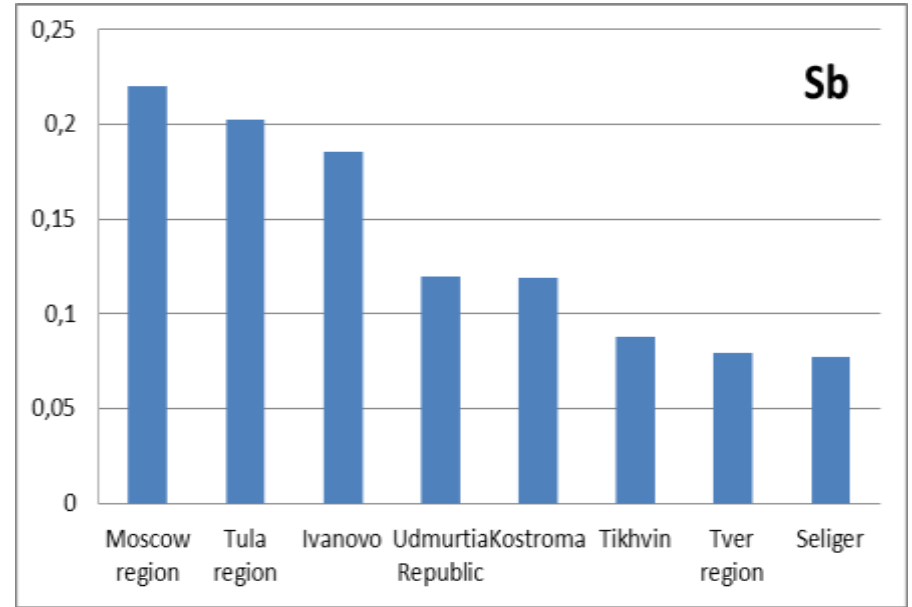
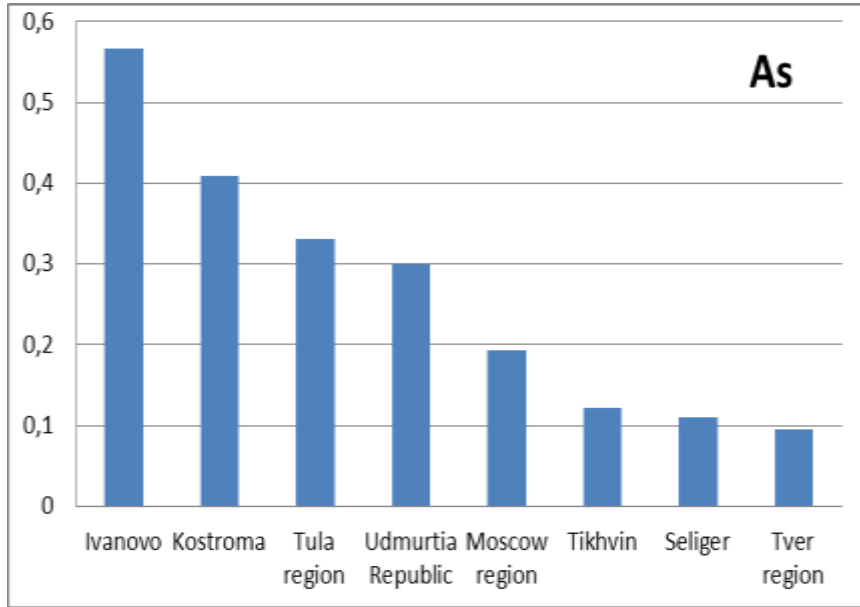


Sampled territory in Kostromskaya and Ivanovskaya regions

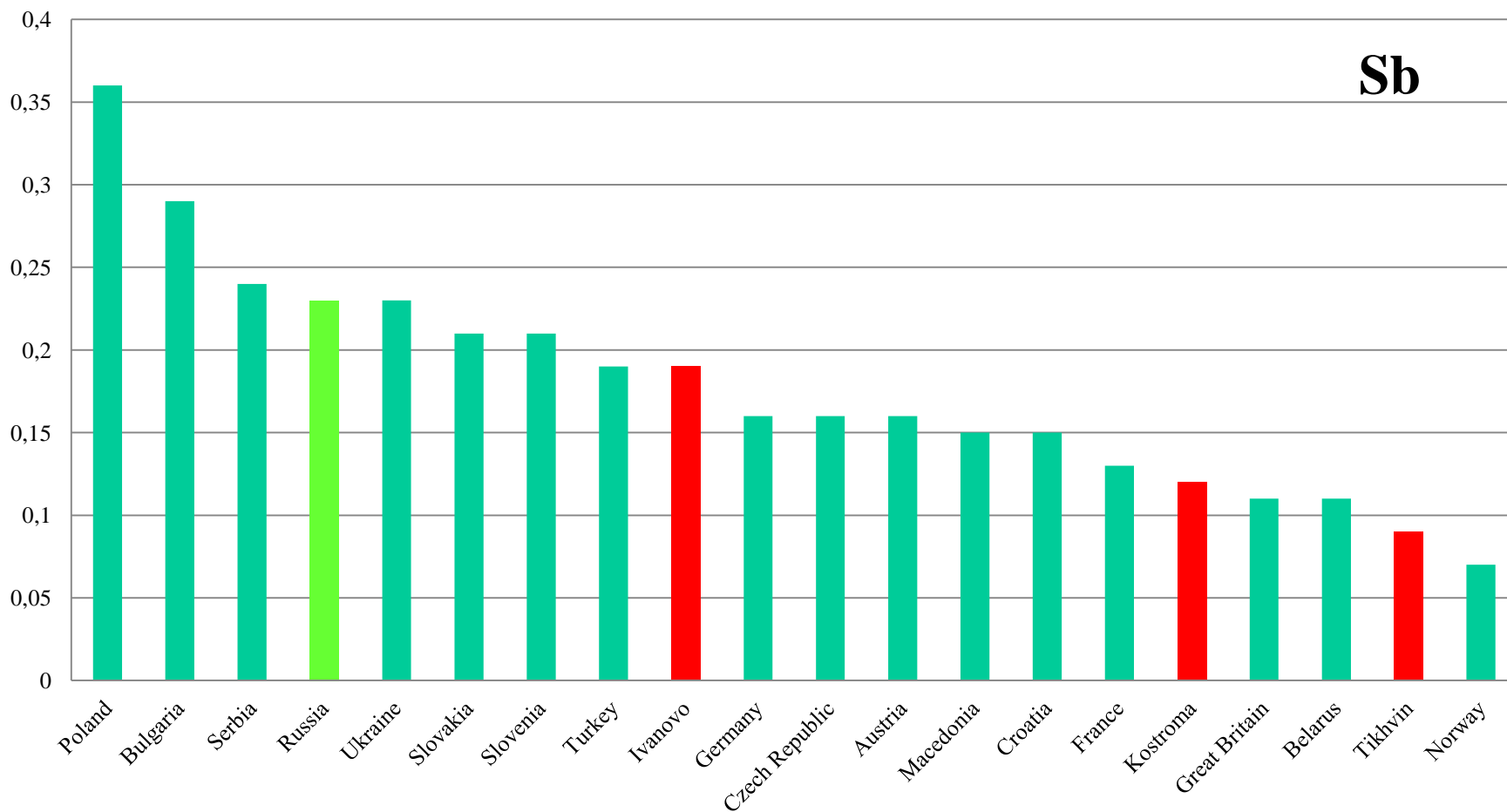
30+40



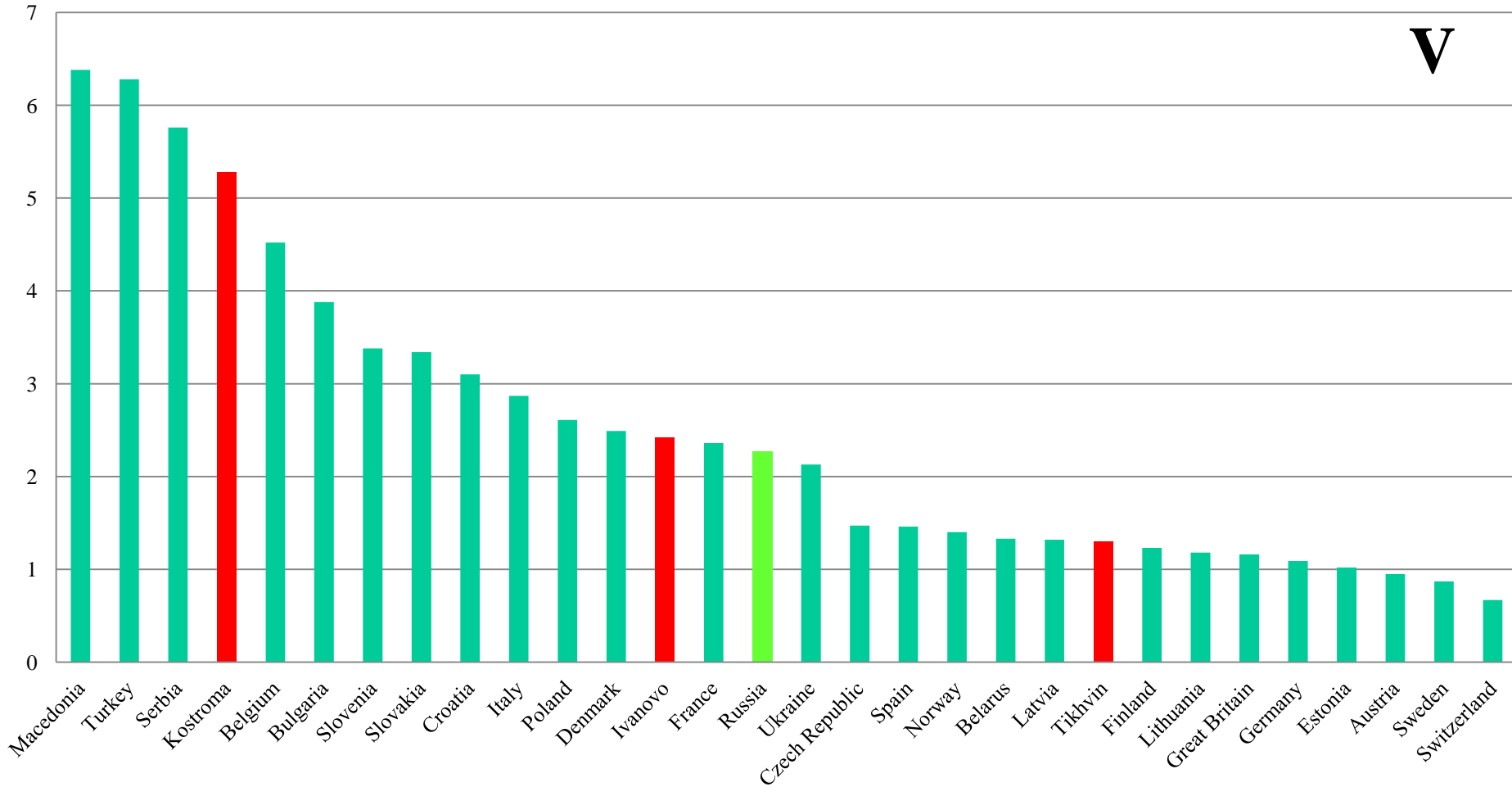
Elements content in selected Russian regions



Elements content in selected European regions



Elements content in selected European regions



Conclusions

- High contents of some elements are observed in the vicinity of big industrial object.
- To investigate the impact of an oil-refinery plant near Yaroslavl on the neighbor territory of Kostroma region its necessary to collect samples from the whole territory of the region.
- The investigated area is quite clean in comparison with other Russian regions as well as European countries.

Thank you